

Co-President (Classified): **Jeri Ingallinero**



jingallinero@lesd.k12.or.us

541.461.8305

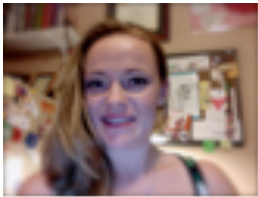


Co-President (Licensed): **Tracy Mansfield**

mansfieldlcea@clyr.com

541.515.1652

Vice President: **Sara Prechtel**



sprechtel@lesd.k12.or.us

541.461.8367



bpassenger@lesd.k12.or.us

541.461.8359

Secretary: **Brad Passenger**

Treasurer: **Gene O'Neil**



goneil@lesd.k12.or.us

541.688.9611

Representatives

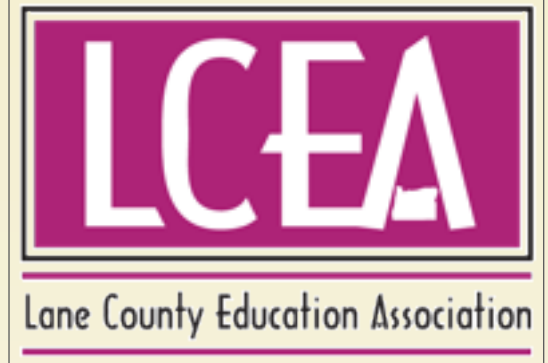
- Catherine Burke-Maher (Classified)
cburkemaher@lesd.k12.or.us
- Jason Crain (Licensed)
jcrain@lesd.k12.or.us
- Dave DeBlaker (Classified)
ddeblaker@lesd.k12.or.us
- Gail Galbreath-Sheredy (Licensed)
ggalbreathsheredy@lesd.k12.or.us
- Becca Huntoon (Classified)
rnickolaus@lesd.k12.or.us
- Kelani Larsen (Classified)
klarsen@lesd.k12.or.us
- Verna McLaughlin (Classified)
vmclaughlin@lesd.12.or.us
- Margie Myska (Licensed)
mmyska@lesd.k12.or.us
- Terran Nuadha (Classified)
tnuadha@lesd.k12.or.us
- Rick O'Shea (Licensed)
roshea@lesd.k12.or.us
- Viola Tabor (Classified)
vtabor@lesd.k12.or.us
- Kate Weber (At Large)
kweber@lesd.k12.or.us
- Cameron Yee (Main Campus)
cyee@lesd.k12.or.us

Come to an Executive Board meeting and let us know what's important to you. Thirty minutes at the beginning of every meeting will be dedicated to public participation. Meetings are held every second Monday at 5:30, usually at Market of Choice on 29th and Willamette in Eugene.

LCEA

1200 Hwy 99 North

Eugene, OR 97402



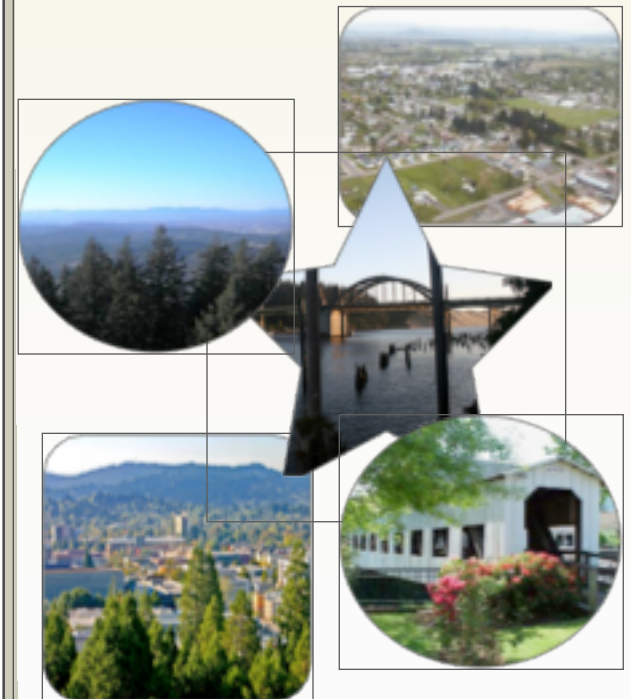
SUPPORT

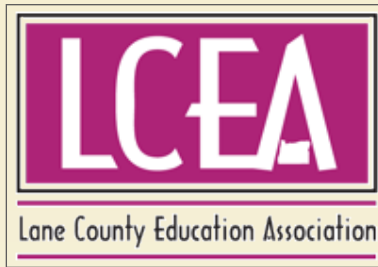
Advocacy

Communication

Well-being

Teamwork





What You Need To Know

ABOUT LCEA

LCEA is governed by the Executive Board, which is made up of volunteers who are elected by membership.

LCEA is one of the few "wall-to-wall" Unions in Oregon. Licensed and classified employees are members of the same Union giving us larger numbers when negotiating contracts.

All members are supported equally. The Executive Board is here to represent members and to ensure that contractual rights are upheld.

WHO ARE THE MEMBERS

After you sign up, you are a member of the Lane County Education Association (LCEA). When you become a member of LCEA you automatically become a member of the Oregon Education Association (OEA) and the National Education Association (NEA).

HOW YOU SIGN UP

You can join anytime by filling out a membership form and giving it to a member of the Executive Board.

WHAT ARE THE BENEFITS

LCEA membership is open to all employees (half-time or more), except management. As a member you will have support and opportunities to:

- ✓ Be involved in decision making that guides the LCEA and Lane ESD.
- ✓ Influence contract negotiations, benefits, safety, and input meetings with management.
- ✓ Receive support from Executive Board members, OEA consultants, and OEA legal support if needed.
- ✓ Be involved in Oregon politics by making a voluntary contribution to People for the Improvement of Education (PIE). The donation is a tax credit.
- ✓ Receive all manner of NEA member benefits (www.neamb.com).

WHAT IF I DON'T SIGN UP

If you choose not to become a member, some benefits are not available to you.

- ✗ You will not have a vote or a voice on issues that come to the membership.
- ✗ You will not have access to OEA legal support.
- ✗ You will not be ineligible for NEA member benefits.
- ✗ OEA and NEA fees will be taken from your pay regardless of your becoming a member (see FEES).

FEES

Oregon is a Fair Share state, meaning that even if you don't join, you still have to pay. Dues are deducted from your paycheck for LCEA, OEA, and NEA. LCEA evaluates their dues annually.

The OEA and NEA dues amounts are calculated by a formula that depends on the number of hours you work per year and your status as classified or licensed. A portion of your union dues are tax deductible.

www.lcea.net

